

**Welcome From
Eng. Basem Tweme**

Mission Statment

Approach

Criteria for Success

Customer Care

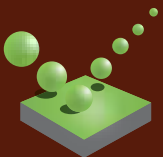
Staff

Agencies

Projects

New Products

Lighting Magazine



**Beam Engineering
Technology Ltd.**

WELCOME...



Welcome to our first newsletter. It pleases us to forward you this first newsletter of ours, with the aim of introducing you to our firm, and giving you a clear idea about the overall functions and activities that we undertake. And to give you a brief description about the projects we have executed during the last two years.

I hope that you will find this Newsletter interesting and informative.

We look forward to seeing you at our offices and showroom.

We hope that the contents of this Newsletter will be useful and worthwhile.

One last thing, if you have a problem with our products or services and you think we can improve, please do not

hesitate to contact me!
Eng. Basem Tweme
General Manager

MISSION STATEMENT

To provide quality products and services that totally satisfy our customers' needs.

We will creatively apply our products for public and private sector users of artificial interior and exterior lighting.

It is essential that our customers recognize and receive outstanding products and service based on our criteria for success, and that our employees and business associated benefit from our success.

Our name is associated with the best quality that may be used to develop new market based upon our unique products.

It is our goal to become No. one in Palestine that offers the best lighting solutions.



Terra Sancta
Kindergarten - Bethlehem

ESTABLISHMENT

BEAM ENGINEERING TECHNOLOGY LTD. (BET) was established in 2002 as a company specialized in the comprehensive field of lighting as follows: Interior, Exterior, Decorative & Emergency.

BET also provides its services and support starting with the creation & design of a particular project till its completion by the contractor, in addition to supervision of proper installation of our products.

BET has a separate section for interior design with specialized Architects. BET is a wholly private business with a specialized unique show room.

APPROACH

Our success is based on five-basic principles:

Competitive price. Quality of products and services. Dependability of products, delivery, and filed service. Flexibility (Broad product range, customized products, and a fast response time). Innovation in products and technology.

CRITERIA FOR SUCCESS

Our aim is to maintain position as one of the leading suppliers of lighting products in an educational strategy, and getting the customers to fully understand and appreciate the products performance and purposes.

Giving full support in the design of lighting and in choosing the best lighting solution.



Institute for Community Partnership – B.U.



French German Cultural Center - Ramallah

CUSTOMER CARE

We believe that closer customer contact will bring customers into contact with personnel from the following areas:

Sales: Our sales office consists of a team of dedicated sales staff whose job is to provide answers to customer inquiries, produce quotations and handle order processing. Sales Engineers work closely with Project Engineers to provide the best lighting

solutions.

Project Engineering: Upon receipt of order a Project Engineer is appointed to the project. He is in-turn overseen by a Project Manager. A full set of specifications for each lighting fixture with its exact location is produced and submitted for full approval. Project Engineers are available by telephone, fax and e-mail to enable direct contact with the customer.



Beit Al Liqa Conference Hall – Beit Jala

STAFF

Beam Engineering Technology Ltd. consists of a dedicated team of engineers, with the main goal of promoting the products in an educational strategy. Selling the product is not the main criteria, yet getting the customers to fully understand and appreciate the products

performance and purposes.

AGENCIES

We are the sole representative in Palestine for the following lighting fixture manufacturers; Fitzgerald (UK) (Authorized Distributor), Concord (UK), Lumiance (UK), Targetti (Italy), Exterior Vert (Italy), Boluce (Italy), Bega (Germany), Boom (Germany), Limburg (Germany).

PROJECTS

BET has managed to win many projects during the last two years, some of which are the following:

1. *Jordan Chemical Laboratory* – Bethlehem: Special lighting fixture with waterproof and dustproof protection.

2. *French German Cultural Center* – Ramallah: Project with decorative and special effects lighting.



French German Cultural Center - Ramallah

3. *Armenian Project* – Bethlehem: Steel structure decorative lighting fixture with special effects.



Armenian Project – Bethlehem

4. *Institute for Partnership* – Bethlehem University – Bethlehem: Special Project with very special lighting fixtures indoor and outdoor (Fitzgerald Lighting).



Institute for Partnership –

Bethlehem University

5. *Anatreh Quarter* – Bethlehem:

Rehabilitation of street with decorative lighting



Anatreh Quarter – Bethlehem:

6. *Talita Kumi Kindergarten* – Beit Jala

Unique project with special decorative lighting.



Talita Kumi Kindergarten – Beit Jala

7. *Terra Sancta Kindergarten* - Bethlehem:

Project with downlights and special fluorescent lighting fixtures.



Terra Sancta

Kindergarten- Bethlehem

8. Beit Al Liqa – Beit Jala:

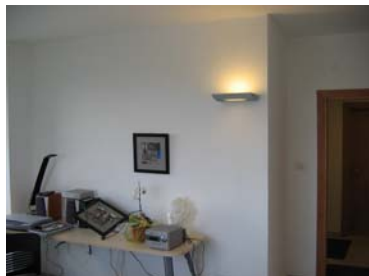
Multipurpose building with decorative lighting.



Beit Al Liqa – Beit Jala

9. Renovation of Bethlehem University – Bethlehem:

Special Lighting for corridors, classrooms, etc...



French German Cultural Center - Ramallah

10. National Insurance Co. – Bethlehem:

Effect Lighting for offices with decorative lighting.



National Insurance Co. – Bethlehem:

11. Lama Brothers Souvenir Shop – Bethlehem:

Special Area for precious Icons with special decorative light.



Lama Brothers Souvenir Shop – Bethlehem:

company is working on. Eng. Tweme has been able to arrange a schedule for a second visit for a team of engineers that will occur during next April or June 2006.



Eng. Basem Tweme at Fitzgerald UK

VARIETY

BET is working on its own website, which will include all necessary information that any designer, contractor or customer may need concerning our lighting fixtures. This website will be ready soon.



Eng. Basem Tweme with Tim Fitzgerald / Director Of The Company

VISITS

The general Manager of BEAM ENGINEERING TECHNOLOGY LTD. Has recently visited FITZGERALD UK and discussed the various projects that the

NEW PRODUCTS

1. Aesthetic Design for the Sceptre 9

The Sceptre 9 is the latest addition to the flood

lighting range from Fitzgerald Lighting. Supplied

complete with lamp, the



Sceptre 9 has been created with aesthetic design and modern lines, and is suitable for indoor and outdoor retail areas, architectural detail in buildings, and urban applications.

Available in 70 to 150W MBI lamp variances, the

Sceptre 9 boasts very high photometric performance,

quick and easy maintenance, and zero light pollution

installation possibilities.

Other technical merits include 5 mm thick, heat toughened, light grey sodium-calcium silk screen

printed safety glass. The technopolymer glass closing

frame remains fixed to the body during maintenance,

and the glass gasket is produced in anti-ageing silicone rubber.

Variations include soft or prismatic glass

lenses, and reflectors with different

reflective surfaces to enhance

beam output, in both a symmetric and circular, and

narrow and wide beam.



Sceptre 9

2. Reduced installation costs with the new Integra range

A recent addition to the recessed Gridpack range from Fitzgerald

Lighting, is the new Integra. Ideal for offices, schools and retail

environments, the Integra provides a stylish yet economical and

quality lighting solution. As well as one luminaire being suitable for

both 15mm and 24mm exposed T grid systems, other benefits include

reduced labor costs due to ease of installation, and a range of low

cost attachments are also available.

A further addition to the range is the pro-Integra, which features advantages as the Integra, but also comes as standard with

high frequency control gear, and triphosphor color 84 lamps, providing an energy efficient luminaire pack



Integra Range

NEW PROJECTS

Beam Engineering Technology was able to win many new projects among them are the following:

- Al Khader Stadium: All lighting fixtures for this project is FITZGERALD an International Football stadium. The stadium consists of four 45meter light towers with several building for changing and showers. The project must be ended June 2006.
- Beit Jala Municipality Street Lighting: A project donated by the USAID and CHF. The project consists of a huge number of Street lighting fixtures 70W and 250W.
- Al Nasser Investment Co.: Stone Factory consists of main building for the factory including the offices and other facilities.
- St' Joseph School: New extension classes and Laboratory.

BEAM ENGINEERING TECHNOLOGY LTD.

229 Dr. Gmeiner
(Karkafeh) St.
P O BOX 286 - Bethlehem
-Palestine
TEL + 970 2 2750246

FAX + 970 2 2751181
Mobile: 0599716737,
0522316589

E mails:

Information

info@beam-lighting.com

Customer Service

custservices@beamlighting.com

Sales Department

sales@beamlighting.com

Web Site

www.beam-lighting.com