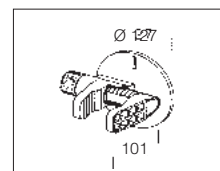
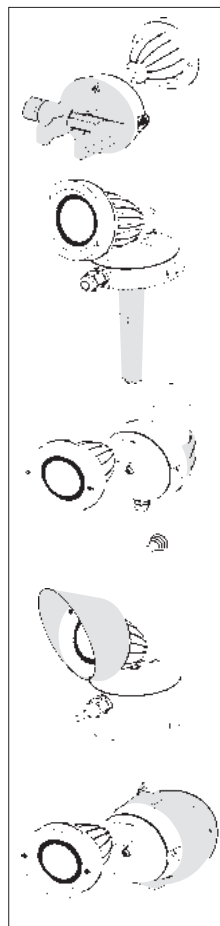
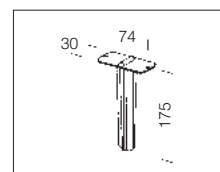




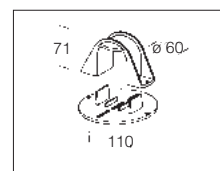
ACCESSORIES FOR KOALA



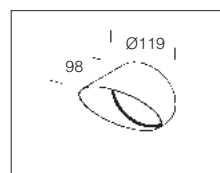
acc. 118 clamp	
black	991334-00
In fiber glass nylon. Enables Koala to be installed on different surfaces without the need to fix it definitively. Clamp opening between 20mm (min) and 60mm (max).	



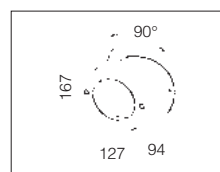
acc. 119 spike	
black	991335-00
In fiber glass nylon. For planting Koala into the ground.	



acc. 120 pole support	
black	991336-00
In fibreglass nylon. To apply Koala on any Ø 60 pole in any position.	



acc. 114 conveyor	
m. silver	991330-00
In aluminium. To direct the light beam in one direction. Only for art. Koala.	



acc. 116 corner support	
black	991332-00
In fibreglass nylon. To install Koala on a corner.	



Housing/Frame: die-cast aluminium with cooling fins.

Diffuser: frosted and pressed glass. Complete with transformer.

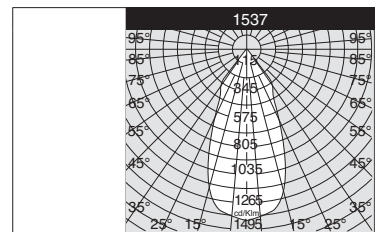
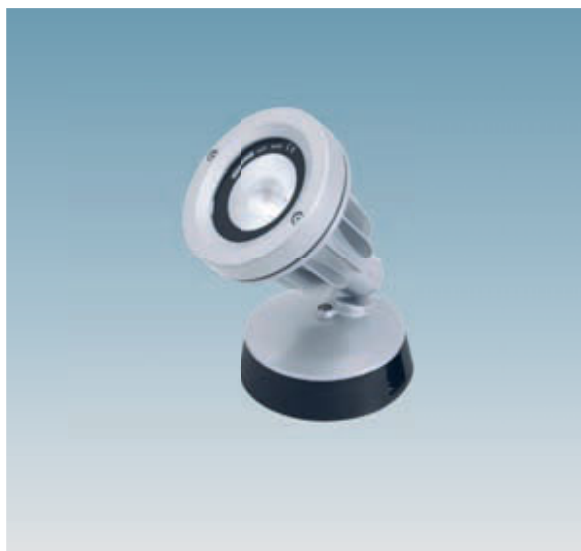


1537 - 3,3W		
0.5	Ø0.24	2091
1.0	Ø0.48	523
1.5	Ø0.72	232
2.0	Ø0.96	131
2.5	Ø1.20	84
m	Ø1.44	58lux



1537 Koala - Power LED					
		CLD CTL		LED (Ta=25°C)	
wattage (350mA)	colour	weight	code	W tot	K - ølm 350mA - degrees
3,3W LED white	m. silver	0.80	431816-00	3,3W	4000K - 300lm - 25°
3,3W LED white	graphite	0.80	431817-00		
3,3W LED white	corten	0.80	431816-2191		
3,3W LED white	m. silver	0.80	431818-00		
3,3W LED white	graphite	0.80	431819-00		
3,3W LED white	corten	0.80	431818-2191		3000K - 231lm - 25°

On request: 8° e 40° beam angle.
Incorporated power supply 220-240V 50/60 Hz.



1537 Koala - ES					
		CLD CTL		LED (Ta=25°C)	
wattage (500mA)	colour	weight	code	W tot	K - ølm 500mA - Ra - degrees
14W LED white	m. silver	0.80	431828-00	14W	3000K - 1000lm - Ra ≥ 80 - 46°
14W LED white	graphite	0.80	431829-00		
14W LED white	corten	0.80	431828-2191		

On request: 4000K; beam angle 13°, 28° and 55°.

