

"Venere" is a large suspension/ceiling lamp made of plastic. Designed for use with new technologies, compact fluorescent lamps, discharge lamps or Power Led lamps.

Available in semi-clear material for interior lighting applications.

"Venere" is an original lighting system that offers different applications, including "chromotherapy".

"Venere" is a highly striking and efficient luminaire that is particularly ideal for use in public places, where next to white light, which is more suitable for use during the day, LED and Power Led RGB lights offer a wide range of colour schemes that create sophisticated atmospheres according to the time of day and night.

External housing: in semi-opal polyethylene.

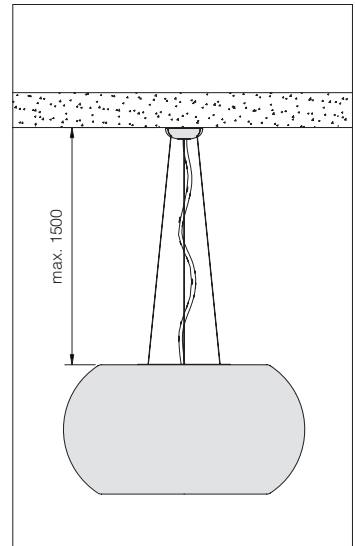
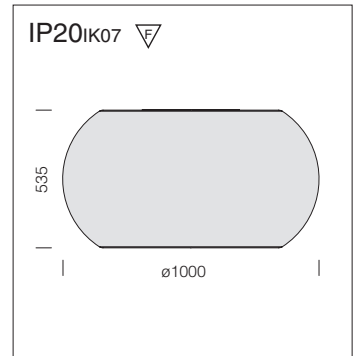
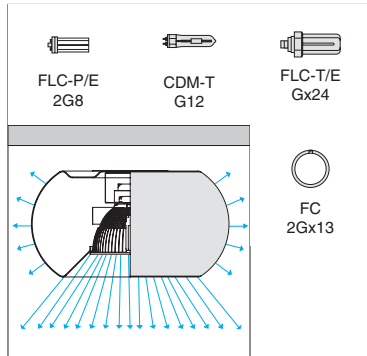
Internal reflector: made of V2 shatterproof and self-extinguishing clear polycarbonate, with anti-glare micro frosted finish. Prismatic on the inside for improved light control, UV stabilized. Scratch-resistant coating.

Electric ring: 230-240V/50-60Hz power supply. Hard wire, 0.5 sqmm cross section, PVC-HT sheath, resistant up to 90° according to CEI 20-20 standards. Supplied with socket-pin connector. Maximum allowed lead cross-section of 2.5 sqmm.

Equipment: can be fixed directly onto the ceiling.

Lamps and LED: supplied with high efficiency 4000°K lamps and LED strips 5400K.

Available on request: double socket-pin terminal block for dual switching.



Venere 42+55				
		CELL		Lamps (Ta=25°C)
wattage	colour	weight	code	Kelvin - ølm - Ra
FLC-T/E 1x42 + FC 55	white	15,00	22212810-00	4000K-3200 lm-Ra 1b-q 4+4000K-4200 lm-Ra 1b

Venere 70+55				
		CELL		Lamps (Ta=25°C)
wattage	colour	weight	code	Kelvin - ølm - Ra
CDM-T 1x70 + FC 55	white	15,00	22212812-00	4200K-6600 lm-Ra 1b + 4000K-4200 lm-Ra 1b

Venere 85+55				
		CELL		Lamps (Ta=25°C)
wattage	colour	weight	code	Kelvin - ølm - Ra
FLC-P/E 1x85 + FC 55	white	15,00	22212814-00	4000K-6000 lm-Ra 1b + 4000K-4200 lm-Ra 1b

Venere 42 + LED white						
		CLD CELL-T		Lamps FL (Ta=25°C)	LED 24 V	
wattage	colour	weight	code	Kelvin - ølm - Ra	W tot.	K
FLC-T/E 1x42 + LED 7,2 whi.	white		22212811-00	4000K - 3200 lm - Ra 1b	58	5400

FL and LED are supplied with double switching mode. On request: LED version.

Venere 70 + LED white						
		CLD CELL-T		Lamps CDM (Ta=25°C)	LED 24 V	
wattage	colour	weight	code	Kelvin - ølm - Ra	W tot.	K
CDM-T 1x70 + LED 7,2 whi.	white		22212813-00	4000K - 3200 lm - Ra 1b	58	5400

FL and LED are supplied with double switching mode. On request: LED version.

Venere 85+LED white						
		CLD CELL-T		Lamps FL (Ta=25°C)	LED 24 V	
wattage	colour	weight	code	Kelvin - h - ølm - Ra	W tot.	K
FLC-P/E 1x85 + LED 7,2 whi.	white		22212815-00	4000K - 6000 lm - Ra 1b	58	5400

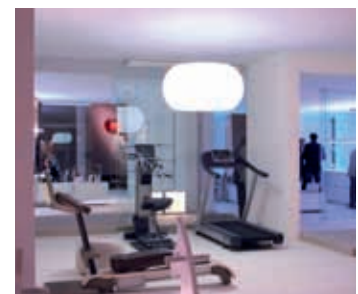
FL and LED are supplied with double switching mode. On request: LED version.

Venere 42+RGB						
		CLD CELL-T		Lamps FL (Ta=25°C)		
wattage	colour	weight	code	Kelvin - ølm - Ra	W tot.	K
FLC-T/E 1x42 + LED 7,2 RGB	white	14,20	22212816-00	4000K - 3200 lm - Ra 1b		

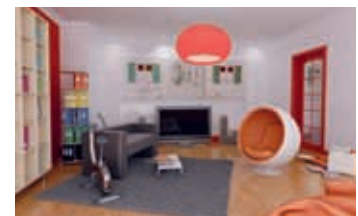
Venere 70+RGB						
		CLD CELL-T		Lamps FL (Ta=25°C)		
wattage	colour	weight	code	Kelvin - ølm - Ra	W tot.	K
CDM-T 1x70 + LED 7,2 RGB	white	15,00	22212817-00	4200K - 6600 lm - Ra 1b		

Venere 85+RGB						
		CLD CELL-T		Lamps FL (Ta=25°C)		
wattage	colour	weight	code	Kelvin - ølm - Ra	W tot.	K
FLC-P/E 1x85 + LED 7,2 RGB	white	16,00	22212819-00	4000K - 6000 lm - Ra 1b		

White LED version: supplied with white LED strips 5400K (upon request, 4700K or 6500K),) 24V – 7.2W each (Total 58W)



Led RGB version: supplied with LED RGB strips, 24V – 23.1W. Available upon request with IRE sensor and remote control device. A DMX control version is also available (see next tab)



Simulation



DMX SYSTEM

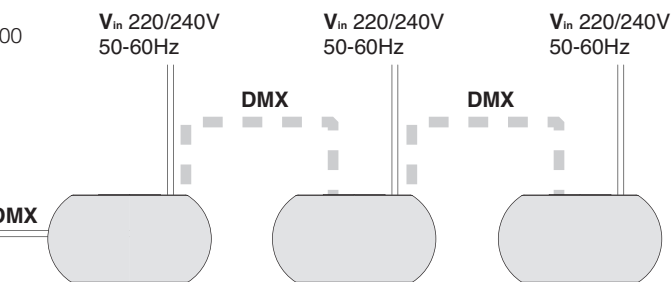
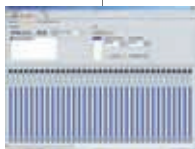
DMX SYSTEM: the system allows to control dmx through DOP controller 22090867-00 or management software DMX 22090863-00 an unlimited number of VENERE DMX for changing color of the body diffusing RGB.

With the DMX SYSTEM can be achieved:

- random mixing of colours for more VENERE
- same colour control for more VENERE

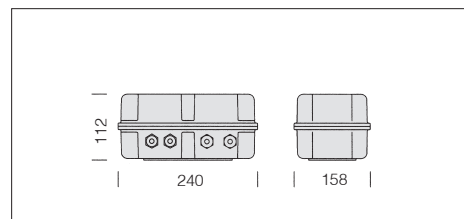
CONTROLLER

LED D.O.P 22090867-00



PROGRAMMING SOFTWARE DMX
22090863-00

DMX signal regenerator	
20W	22092052-00
DMX signal regenerator in waterproof gear box with 24V, 20W power supply. Supplied with in-out wire connection (one going in, four going out) to DMX terminal. To be used after acc. 22092051-00 n. 20.	

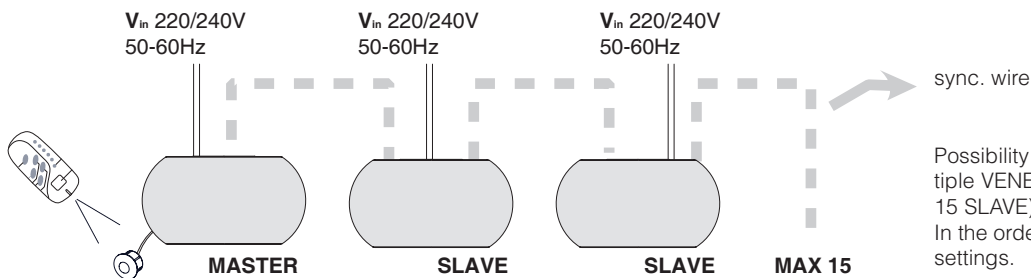


For control of a large number of luminaires (> 16): code 22092052-00 (amplifier DMX)

MASTER/SLAVE

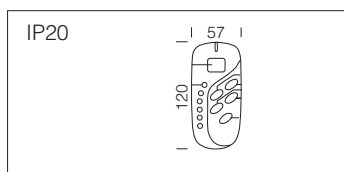
FEATURES:

- standard version included with the program changes color pre-set
- can mix light colours



Possibility of synchronization between multiple VENERE mode MASTER / SLAVE (max 15 SLAVE). In the order, specify VENERE with Slave settings.

Remote control for receiver IRE
22099023-00
Control work a distance of up to 10/15 m.
IRE receiver
22099050-00



Suspension	
aluminium	22003265-00
With three steel cables.	

