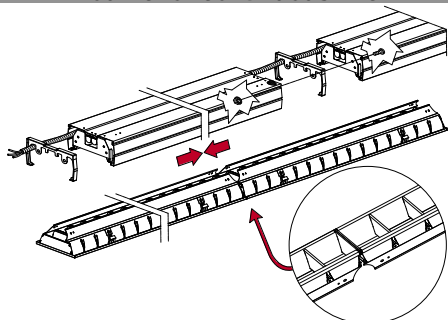
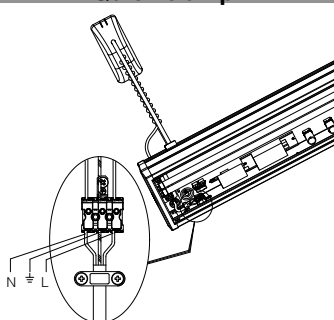


Louvre for continuous line



Quick clamp



Housing: steel stove pre-enamelling galvanized steel using white polyester resin, UV-stabilized, cut-proof rounded edges.

Electric gear: 230V/50Hz power supply. Each module comes with a standard electric line 3x2.5 sq mm, hard wire and PVC-HT sheath, resistant up to 90°C, according to CEI 20-20 standards. Quick connect terminal blocks, maximum allowed lead cross section 2.5 sq mm.

Equipment: 3.5A protection fuse.

Emergency version: In maintained version. In the event of a blackout, a single lamp connected to the back-up circuit continues to operate. Run time: 60 minutes (see chapter). Upon request: 3-hour emergency versions available.



Narrow beam reflector: suitable for warehouses with high narrow aisles.

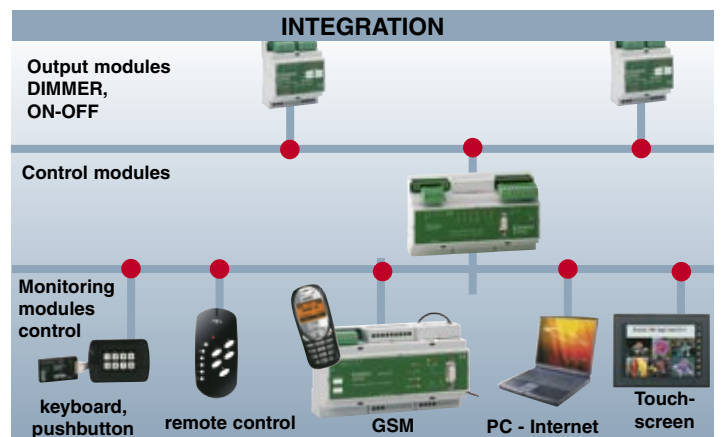
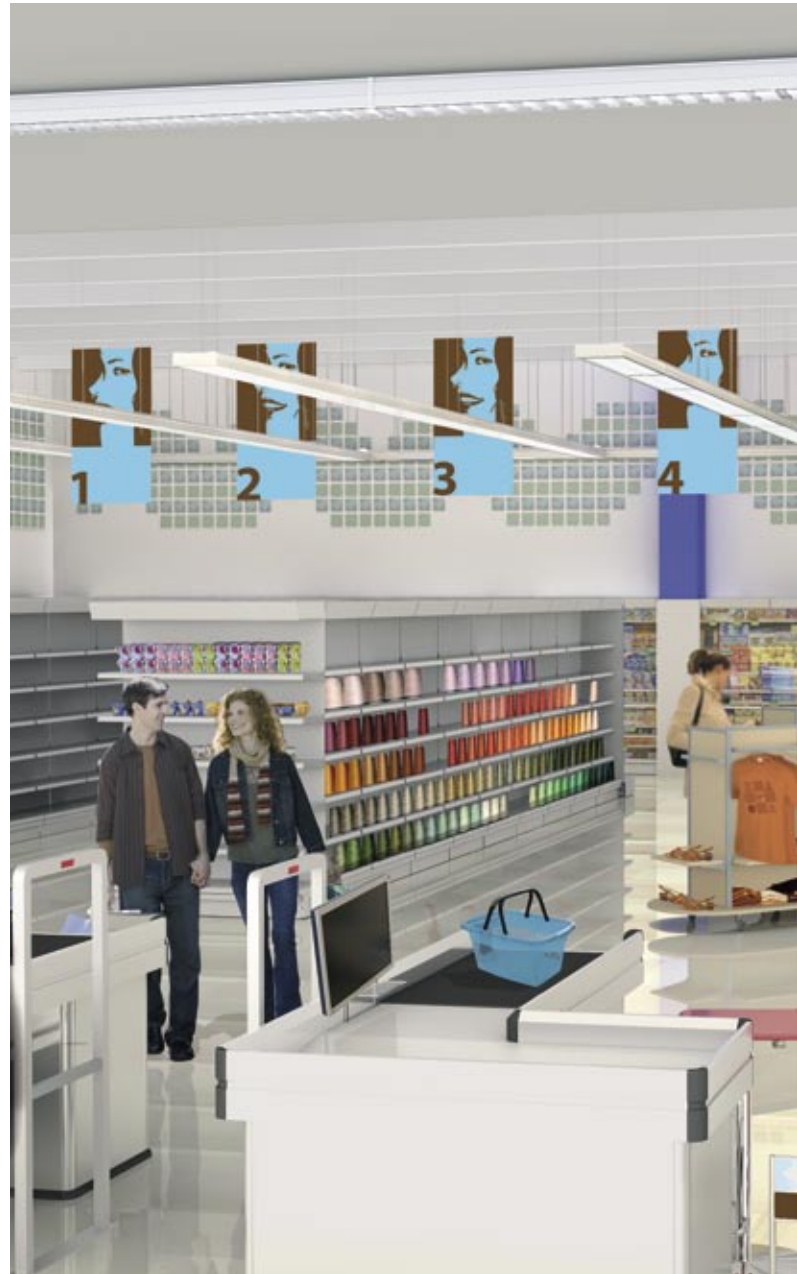
High-gloss luminaire: suitable for cash desk areas, offices fitted with VDT facilities or HI-FI and computer departments.



Wide beam reflector: suitable for lighting one single wall or a set of shelves.



An innovative solution designed to manage the lighting system of commercial premises in the best possible way. One single structure



allows producing constant light based luminous channels; power supply, telecommunication cables, etc. can also be distributed...



Diffuser: suitable for transit areas and acts as a protection screen if a lamp breaks.

Asymmetric reflector: suitable for lighting one single wall or a set of shelves.



Spot: suitable for promotional areas. The spot can be set in any position.



INTEGRATION

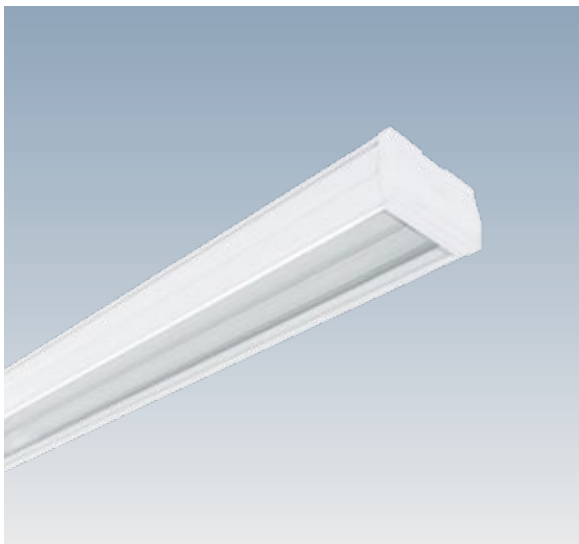
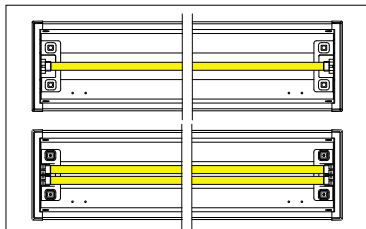
The integration of the Speed system with DUEMMEGI acquisition and control devices allows extending the control to large areas, without using alternative routes, thus converting a traditional lighting system into an integrated management and control system. Simple lighting systems can be set up and controlled from anywhere and can also be extended. PC-modem based remote control, graphic pages on TOUCH SCREEN interfaces.

A2 CONSUMP.: CELL=A2 FL... G5

E

UV

DIM A1



IP40IK07

If supplied with diffuser

Diffuser: diffusers and all symmetric and asymmetric, narrow or wide beam reflectors can be installed.

Lamp: fitted with high performance 4000K T5 lamps.

1930 Speed T5 - without diffuser

wattage	colour	CELL-F		CELLF-E		CELLF-D		Lamps (Ta=25°C)
		weight	code	weight	code	weight	code	Kelvin - ølm - Ra
FL 1x54	white	4.00	124400-00	4.60	124400-07	4.10	124400-51	4000K - 4450lm - Ra 1b
FL 1x49	white	4.90	124401-00	5.60	124401-07	5.00	124401-51	4000K - 4300lm - Ra 1b
FL 2x54	white	4.20	124402-00	4.80	124402-07	4.30	124402-51	4000K - 4450lm - Ra 1b
FL 2x49	white	5.10	124403-00	5.80	124403-07	5.20	124403-51	4000K - 4300lm - Ra 1b

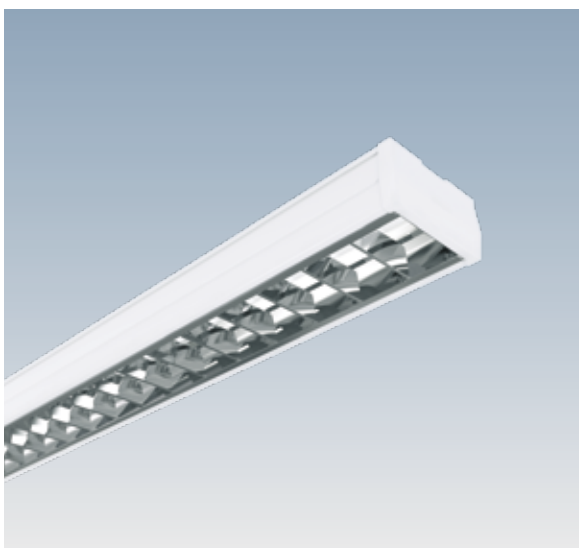
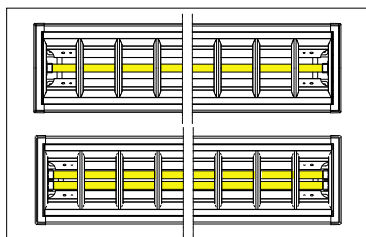
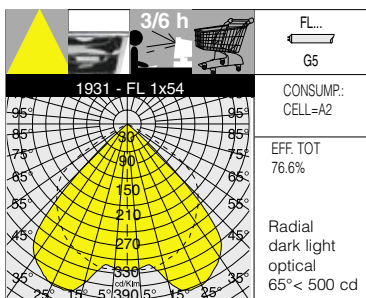
When using asymmetric reflectors, order art. 1930, a two-lamp special version fitted with one lamp only.
The use of this version is recommended with optical accessories, see page 104.

A2 3/6 h CONSUMP.: CELL=A2 FL... G5

E

UV

DIM A1



IP40IK07

If supplied with plate

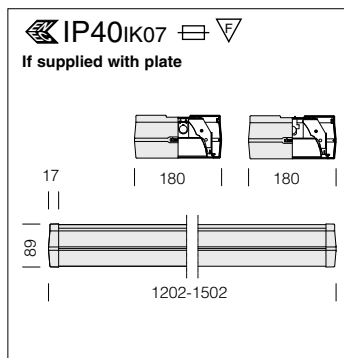
Louvre: double parabolic louvres, in high-gloss plated aluminium 99.99. Anti-glare and anti-iridescence, very low luminance. PVD treatment to increase light efficiency.

Lamp: fitted with high performance 4000K T5 lamps.

1931 Speed T5 - high-gloss optical 99,99

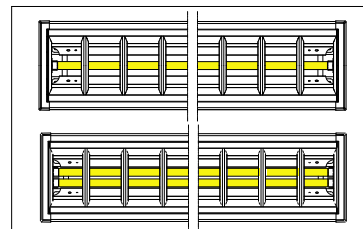
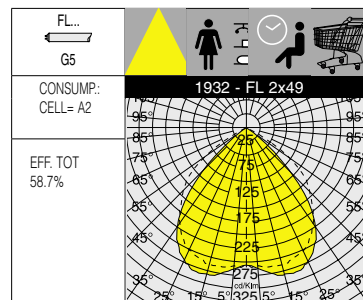
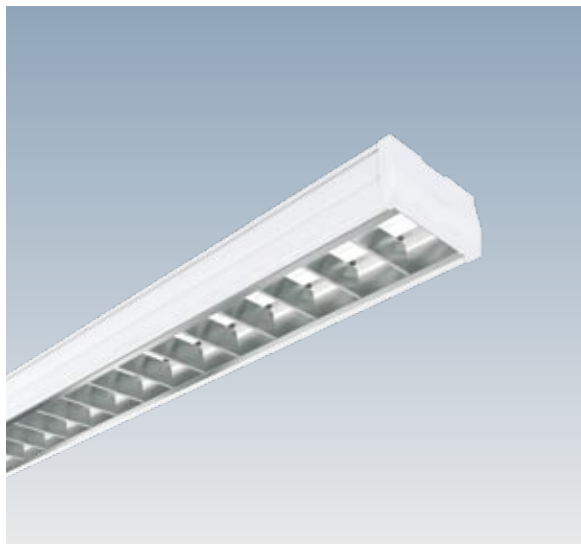
wattage	colour	CELL-F		CELLF-E		CELLF-D		Lamps (Ta=25°C)
		weight	code	weight	code	weight	code	Kelvin - ølm - Ra
FL 1x54	white	4.40	124410-00	5.00	124410-07	4.40	124410-51	4000K - 4450lm - Ra 1b
FL 1x49	white	5.30	124411-00	6.10	124411-07	5.40	124411-51	4000K - 4300lm - Ra 1b
FL 2x54	white	4.50	124412-00	5.10	124412-07	4.60	124412-51	4000K - 4450lm - Ra 1b
FL 2x49	white	5.50	124413-00	6.30	124413-07	5.60	124413-51	4000K - 4300lm - Ra 1b

IP40 Version: plate, acc. 481, is supplied separately



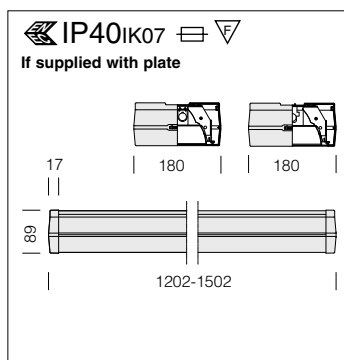
Louvre: double parabolic louvres, in matt plated aluminium 99.99. Anti-glare and anti-iridescence, very low luminance. PVD treatment to increase light efficiency.

Lamp: fitted with high performance 4000K T5 lamps.



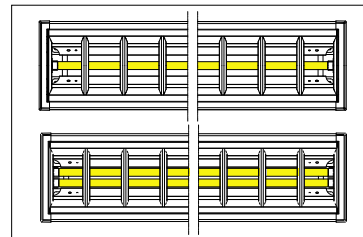
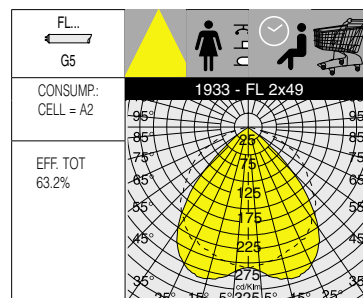
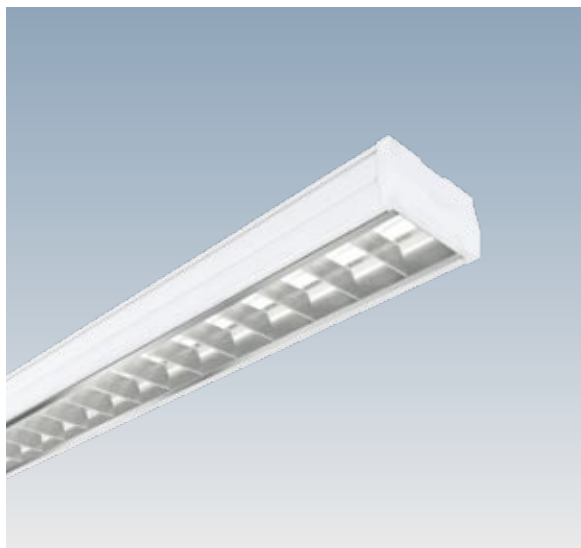
1932 Speed T5 - matt optical 99,99								
		CELL-F		CELLF-E		CELLF-D		Lamps (Ta=25°C)
wattage	colour	weight	code	weight	code	weight	code	Kelvin - ølm - Ra
FL 1x54	white	4.40	124420-00	5.00	124420-07	4.40	124420-51	4000K - 4450lm - Ra 1b
FL 1x49	white	5.30	124421-00	6.10	124421-07	5.40	124421-51	4000K - 4300lm - Ra 1b
FL 2x54	white	4.50	124422-00	5.10	124422-07	4.60	124422-51	4000K - 4450lm - Ra 1b
FL 2x49	white	5.50	124423-00	6.30	124423-07	5.60	124423-51	4000K - 4300lm - Ra 1b

IP40 Version: plate, acc. 481, is supplied separately



Louvre: double parabolic louvres in matt plated aluminium with scored optics for better light distribution.

Lamp: fitted with high performance 4000K T5 lamps.



1933 Speed T5 - matt scored optic								
		CELL-F		CELLF-E		CELLF-D		Lamps (Ta=25°C)
wattage	colour	weight	code	weight	code	weight	code	Kelvin - ølm - Ra
FL 1x54	white	4.30	124430-00	4.90	124430-07	4.30	124430-51	4000K - 4450lm - Ra 1b
FL 1x49	white	5.30	124431-00	6.00	124431-07	5.30	124431-51	4000K - 4300lm - Ra 1b
FL 2x54	white	4.50	124432-00	5.10	124432-07	4.50	124432-51	4000K - 4450lm - Ra 1b
FL 2x49	white	5.50	124433-00	6.30	124433-07	5.50	124433-51	4000K - 4300lm - Ra 1b

IP40 Version: plate, acc. 481, is supplied separately

A2
E
B2
DIM
DA1

CONSUMP:
CELL= A2
CNR= B2

FL...
G13



IP40IK07

if supplied with diffuser

Diffuser: diffusers and all symmetric and asymmetric, narrow or wide beam reflectors can be installed.

1934 Speed T8 - without diffuser

wattage	colour	CNR-F		CNR-F-E		CEL-F		CEL-F-E	
		weight	code	weight	code	weight	code	weight	code
FL 1x36	white	4.30	124500-00	4.90	124500-07	4.00	124500-08	4.60	124500-09
FL 1x58	white	5.50	124501-00	6.00	124501-07	4.90	124501-08	5.50	124501-09
FL 2x36	white	5.80	124502-00	6.40	124502-07	5.00	124502-08	5.60	124502-09
FL 2x58	white	7.40	124503-00	8.00	124503-07	6.00	124503-08	6.60	124503-09

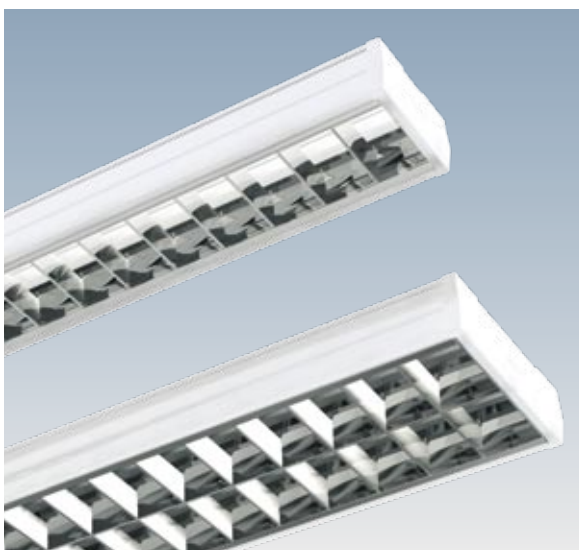
The use of this version is recommended with optical accessories, see page 104.

A2
E
B2
DIM
DA1

CONSUMP:
CELL= A2
CNR= B2

EFFTOT.
71.8%

Radial dark light optical
65° < 500 cd



IP40IK07

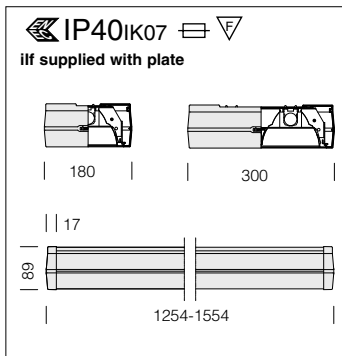
if supplied with plate

Louvre: double parabolic louvres, in high-gloss plated aluminium 99.99. Anti-glare and anti-iridescence, very low luminance. PVD treatment to increase light efficiency.

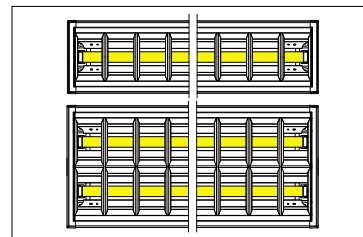
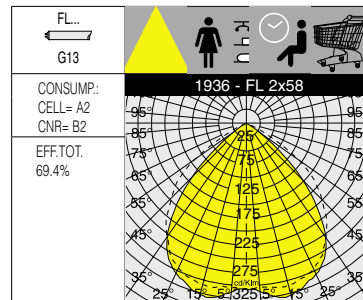
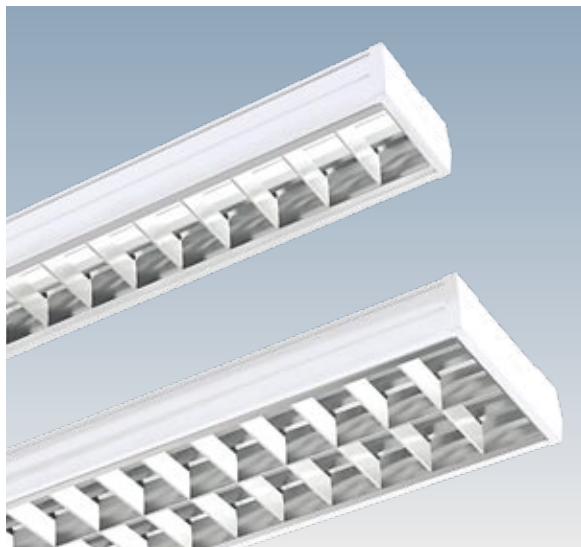
1935 Speed T8 - high gloss optical 99,99

wattage	colour	CNR-F		CNR-F-E		CEL-F		CEL-F-E	
		weight	code	weight	code	weight	code	weight	code
FL 1x36	white	4.60	124510-00	5.20	124510-07	4.40	124510-08	5.00	124510-09
FL 1x58	white	5.90	124511-00	6.50	124511-07	5.30	124511-08	5.90	124511-09
FL 2x36	white	6.30	124512-00	6.90	124512-07	5.50	124512-08	6.10	124512-09
FL 2x58	white	8.10	124513-00	8.60	124513-07	6.60	124513-08	7.20	124513-09

IP40 Version: plate, acc. 481 or 482, is supplied separately



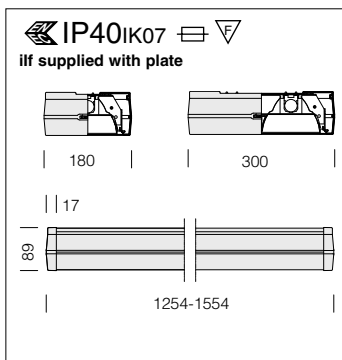
Louvre: double parabolic louvres, in matt plated aluminium 99.99. Anti-glare and anti-iridescence, very low luminance. PVD treatment to increase light efficiency.



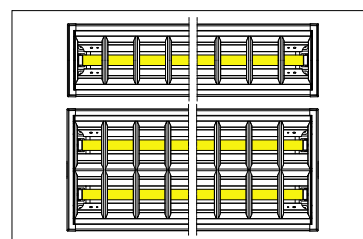
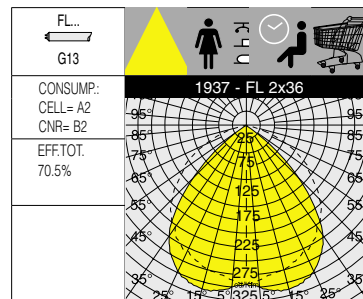
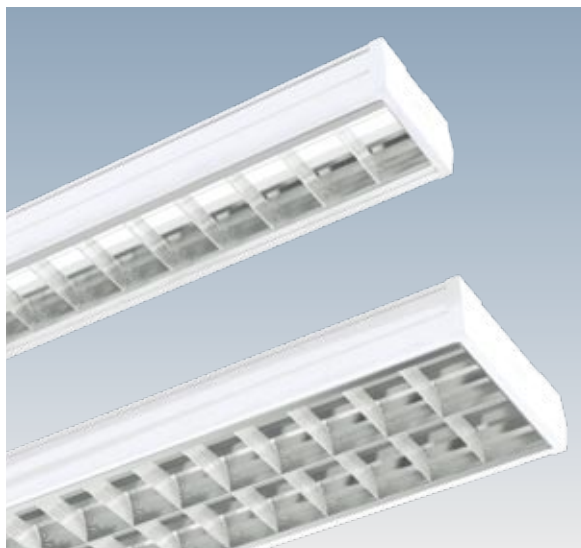
1936 Speed T8 - matt optical 99,99

		CNR-F		CNR-E		CEL-F		CEL-E	
wattage	colour	weight	code	weight	code	weight	code	weight	code
FL 1x36	white	4.60	124520-00	5.20	124520-07	4.40	124520-08	5.00	124520-09
FL 1x58	white	5.90	124521-00	6.50	124521-07	5.30	124521-08	5.90	124521-09
FL 2x36	white	6.30	124522-00	6.90	124522-07	5.50	124522-08	6.10	124522-09
FL 2x58	white	8.10	124523-00	8.60	124523-07	6.60	124523-08	7.20	124523-09

IP40 Version: plate, acc. 481 or 482, is supplied separately



Louvre: double parabolic louvres in matt plated aluminium with scored optics for better light distribution.



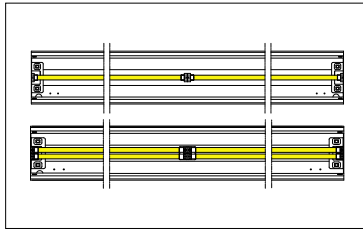
1937 Speed T8 - matt scored optical

		CNR-F		CNR-E		CEL-F		CEL-E	
wattage	colour	weight	code	weight	code	weight	code	weight	code
FL 1x36	white	4.60	124530-00	5.20	124530-07	4.40	124530-08	5.00	124530-09
FL 1x58	white	5.90	124531-00	6.40	124531-07	5.30	124531-08	5.90	124531-09
FL 2x36	white	6.40	124532-00	7.00	124532-07	5.60	124532-08	6.20	124532-09
FL 2x58	white	8.20	124533-00	8.80	124533-07	6.80	124533-08	7.40	124533-09

IP40 Version: plate, acc. 481 or 482, is supplied separately



CONSUMP: CELL= A2 FL... G5



IP40 IK07 if supplied with diffuser

Diffuser: diffusers and all symmetric and asymmetric, narrow or wide beam reflectors or acc 490-1-2 can be installed.

Lamp: fitted with high performance 4000K T5 lamps.

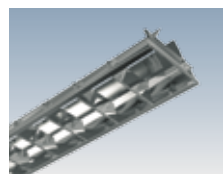
1945 Speed T5 - in-line lamps

		CELL-F		CELL-E		CELL-D		Lamps (Ta=25°C)
wattage	colour	weight	code	weight	code	weight	code	Kelvin - l/m - Ra
FL 1+1x54	white	7.50	124600-00	8.10	124600-07	7.60	124600-51	4000 K - 4450 lm - Ra 1b
FL 1+1x49	white	9.30	124601-00	10.00	124601-07	9.30	124601-51	4000 K - 4300 lm - Ra 1b
FL 2+2x54	white	7.90	124602-00	8.50	124602-07	8.50	124602-51	4000 K - 4450 lm - Ra 1b
FL 2+2x49	white	9.70	124603-00	10.40	124603-07	9.80	124603-51	4000 K - 4300 lm - Ra 1b

Louvres for lamps art. 1945

1931 - 1x54 + acc.490

Radial dark light optical 65° < 500 cd

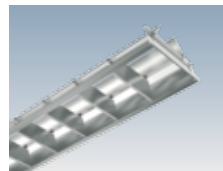


acc. 490 high-gloss optical 99,99

54	993883-00
49	993884-00

Optical with double parabolic louvres, in high-gloss plated aluminium 99.99. Anti-glare and anti-iridescence, very low luminance. PVD treatment to increase light efficiency.

1932 - 2x49 + acc.491

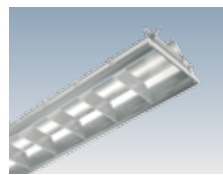


acc. 491 matt optical 99,99

54	993886-00
49	993887-00

Optical with double parabolic louvres, in matt plated aluminium 99.99. Anti-glare and anti-iridescence, very low luminance. PVD treatment to increase light efficiency.

1933-2x49 + acc.492



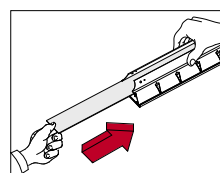
acc. 492 matt scored optical

54	993889-00
49	993890-00

Optical with double parabolic louvres in matt plated aluminium with scored optics.

Suspension mounting is recommended with acc. 432/434.

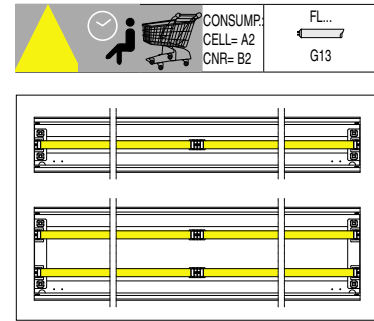
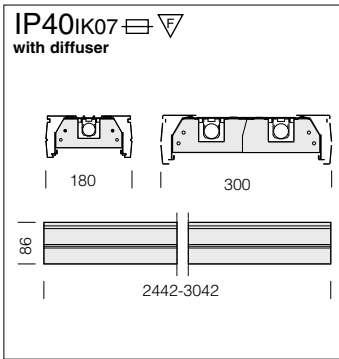
Sp.2 90° 1210/1158/1458/1510



acc. 481 Plate for IP40

54	993960-00
49	993961-00
36	993962-00
58	993963-00

To be used with the Speed range to obtain the degree of protection IP 40. Art. 1945/50 require two additional accessories.



Diffuser: diffusers and all symmetric and asymmetric, narrow or wide beam reflectors, or acc. 494-5-6-7-8-9 can be installed.

1950 Speed T8 - in-line lamps

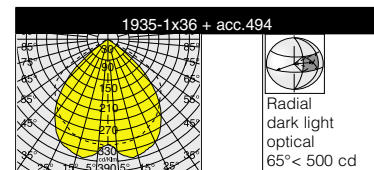
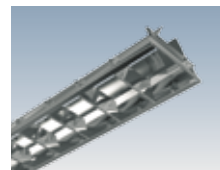
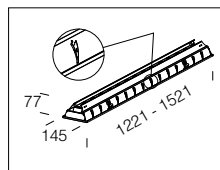
		CNR-F		CNR-F-E		CEL-F		CEL-F-E	
wattage	colour	weight	code	weight	code	weight	code	weight	code
FL 1+1x36	white	8.10	124700-00	8.70	124700-07	7.20	124700-08	7.80	124700-09
FL 1+1x58	white	10.40	124701-00	11.00	124701-07	8.90	124701-08	9.50	124701-09
FL 2+2x36	white	12.10	124702-00	12.70	124702-07	10.50	124702-08	11.10	124702-09
FL 2+2x58	white	15.80	124703-00	16.40	124703-07	12.90	124703-08	13.50	124703-09

Louvers for lamps art. 1950

acc. 494 high-gloss optical 99,99

36 (180)	993935-00
58 (180)	993936-00

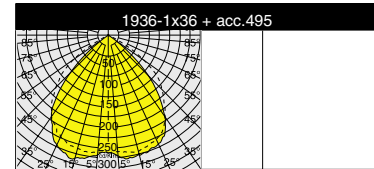
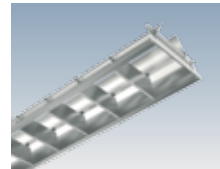
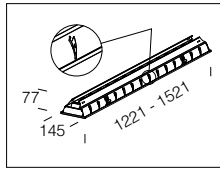
Double parabolic louvers, in high-gloss plated aluminium 99.99. Anti-glare and anti-iridescence, very low luminance. PVD treatment to increase light efficiency.



acc. 495 matt optical 99,99

36 (180)	993939-00
58 (180)	993940-00

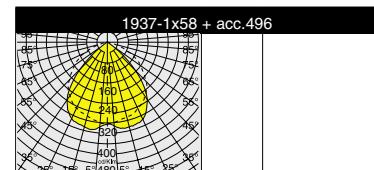
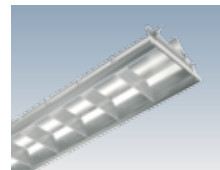
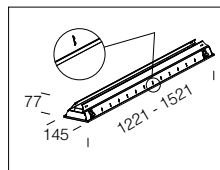
Double parabolic louvers, in matt plated aluminium 99.99. Anti-glare and anti-iridescence, very low luminance. PVD treatment to increase light efficiency.



acc. 496 matt scored optical

36 (180)	993943-00
58 (180)	993944-00

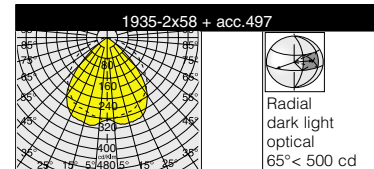
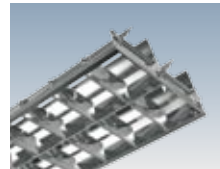
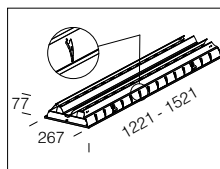
Matt printed plated aluminium with scored optics.



acc. 497 high-gloss optical 99,99

36 (300)	993947-00
58 (300)	993948-00

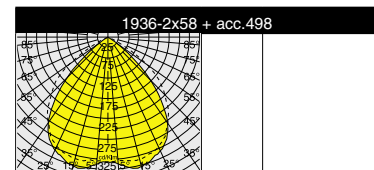
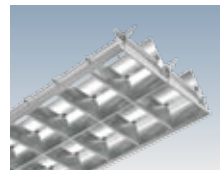
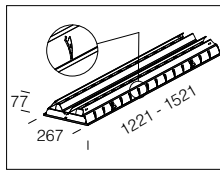
Double parabolic louvers, in high-gloss plated aluminium 99.99. Anti-glare and anti-iridescence, very low luminance. PVD treatment to increase light efficiency.



acc. 498 matt optical 99,99

36 (300)	993951-00
58 (300)	993952-00

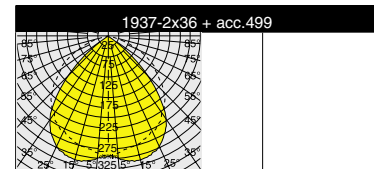
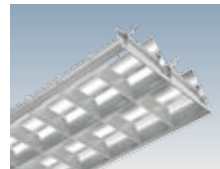
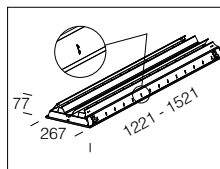
Double parabolic louvers, in matt plated aluminium 99.99. Anti-glare and anti-iridescence, very low luminance. PVD treatment to increase light efficiency.



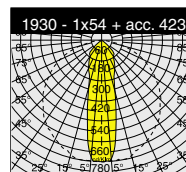
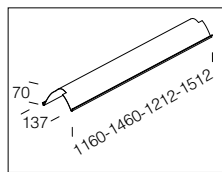
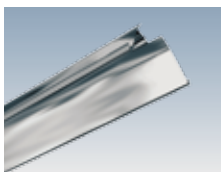
acc. 499 matt scored optical

36 (300)	993955-00
58 (300)	993956-00

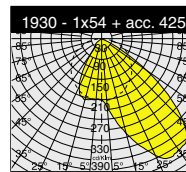
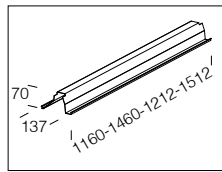
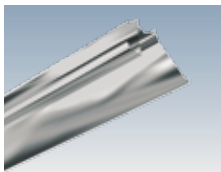
Matt printed plated aluminium with scored optics.



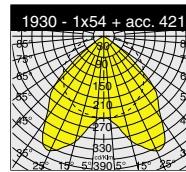
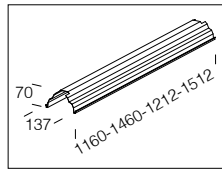
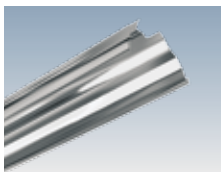
acc. 423 narrow beam reflector	
54	993820-00
49	993821-00
36	993822-00
58	993823-00



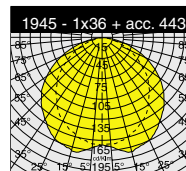
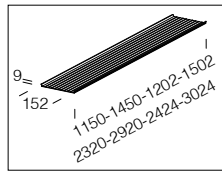
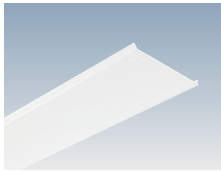
acc. 425 asymmetric reflector	
54	993832-00
49	993833-00
36	993834-00
58	993835-00



acc. 421 wide beam reflector	
54	993800-00
49	993801-00
36	993802-00
58	993803-00



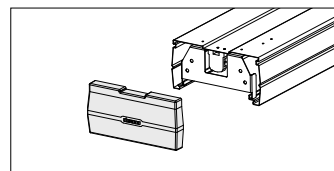
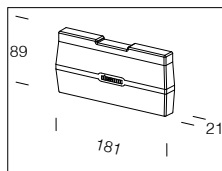
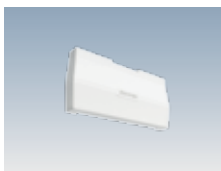
acc. 443 single lamp diffuser	
54	993863-00
49	993864-00
36	993865-00
58	993866-00
1+1x54	993868-00
1+1x49	993869-00
1+1x36	993870-00
1+1x58	993871-00



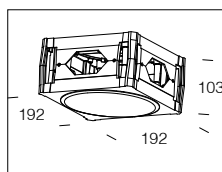
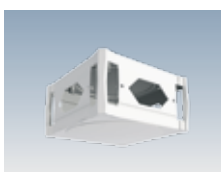
Self-extinguishing and dust proof ribbed polycarbonate with wire cover. It can also be used with acc. 423, 425 and 421.

Version	T5-54W 1160mm	T5-49W 1460mm	T8-36W 1212mm	T8-58W 1512mm	T5-54W double	T5-49W double	T8-36W double	T8-58W double
Reflector	1160	1460	1212	1512				
Diffuser	1150	1450	1202	1502	2320	2920	2424	3024

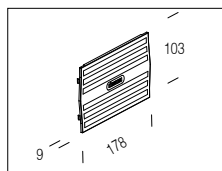
acc. 429 single lamp end cap	
white	993844-00



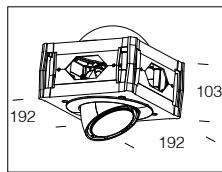
acc. 435 simple cube	
white	993850-00



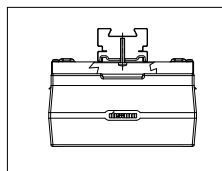
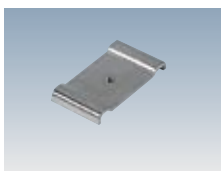
acc. 439 cube cover	
white	993858-00



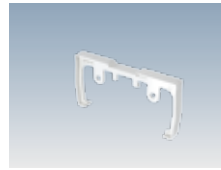
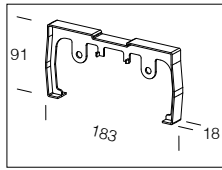
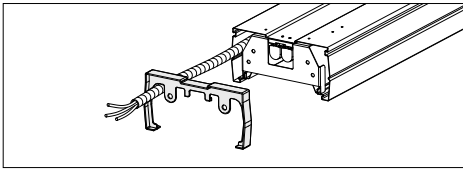
acc. 437 cube with spotlight	
DICR 35	993852-00
CDM-TM 20	993853-00



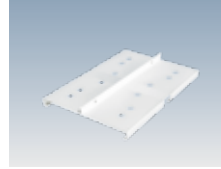
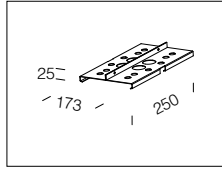
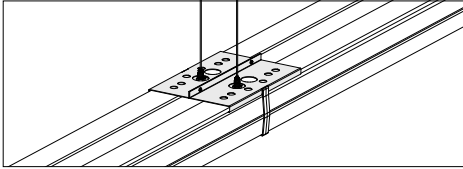
acc. 6036 universal connection	
galvanized	132987-00



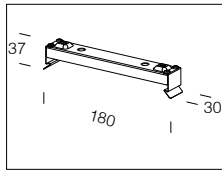
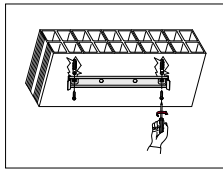
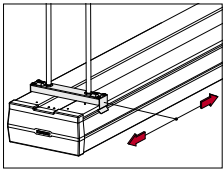
Made of galvanized steel .
To fasten waterproof fixtures on track art. 6000.



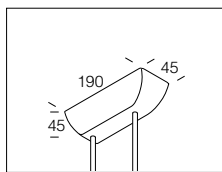
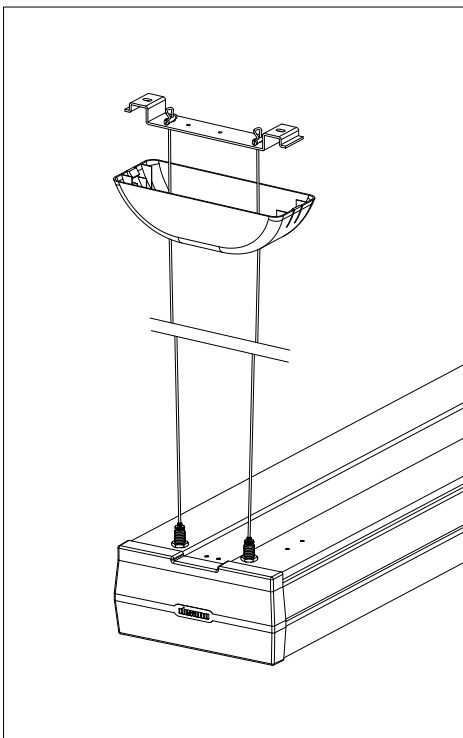
acc. 427 linear joint	
white	993842-00
In ABS. Linear joint system to carry cables. To be used in a continuous line.	



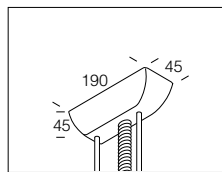
acc. 441 reinforcement plate joint	
white	993860-00
To be used as a steel reinforcement in a continuous line. Use is recommended every two lighting fixtures.	



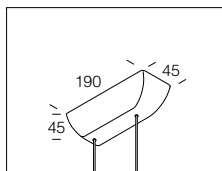
acc. 432 suspension / ceiling mounting	
white	993847-00
To be used with art. 1945/50 for ceiling or suspension installation. 2 per pack.	



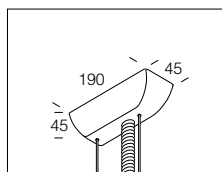
acc. 2605 suspension for rods Ø10	
white	994614-00
Nylon cover and steel brackets. For suspension with rods Ø10. Supply does not include rods.	



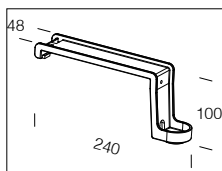
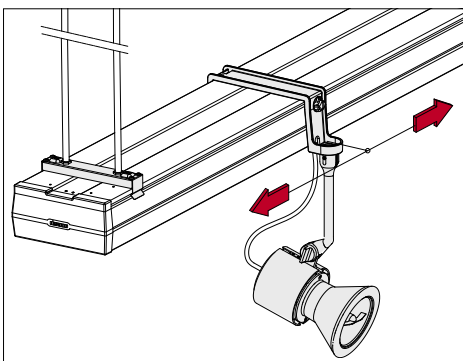
acc. 2606 electrified suspension for rods	
white	994615-00
Nylon cover and steel brackets. Supply power cable (max 2000 W). For suspension with rods Ø10. Supply does not include rods.	



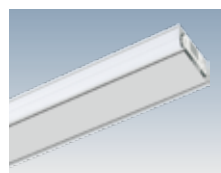
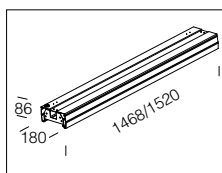
acc. 2607 simple suspension	
white	994616-00
Nylon cover and steel brackets. With steel wire Ø1,5mm; L=1,5m - 30Kg, and millimetric adjustment.	



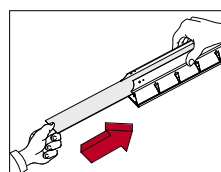
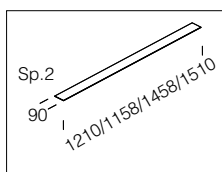
acc. 2608 electrified suspension	
white	994617-00
Nylon cover and steel brackets. With steel wire Ø1,5mm; L=1,5m - 30Kg, and millimetric adjustment.	



acc. 431 spotlight bracket	
white	993846-00
Die-cast aluminium bracket for Fosnova spotlights, Leo, Matrix and Sonik (to be purchased separately). Use is recommended in promotional areas.	

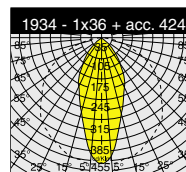
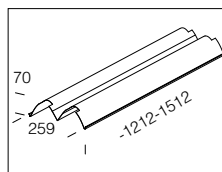
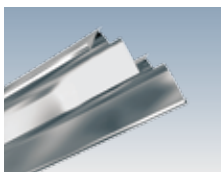


acc. 445 module S	
49 white	993877-00
58 white	993874-00
Supplied with cover and end cap in ABS. Allows the passage of cables and lines of services.	

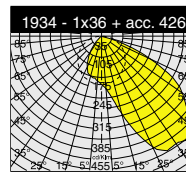
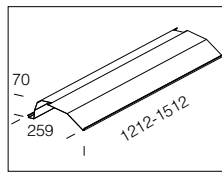
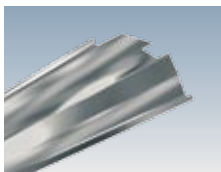


acc. 481 plate for IP 40	
54	993960-00
49	993961-00
36	993962-00
58	993963-00
To be used with the Speed range to obtain the degree of protection IP 40. Packaging 1 piece. In case of use with T8 lamp version buy 2 pieces.	

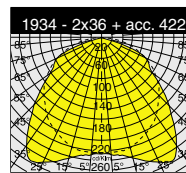
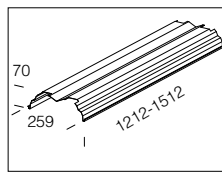
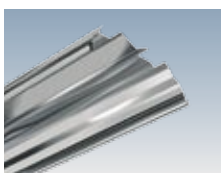
acc. 424 narrow beam reflector	
36	993829-00
58	993830-00
High-gloss aluminium 99.90	



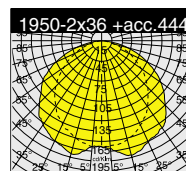
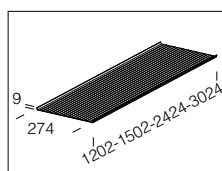
acc. 426 asymetrical reflector	
36	993839-00
58	993840-00
High-gloss aluminium 99.90. To be only use with one-lamp version.	



acc. 422 wide reflector	
36	993812-00
58	993813-00
High-gloss aluminium 99.90	

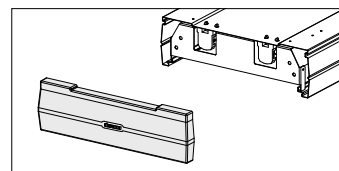
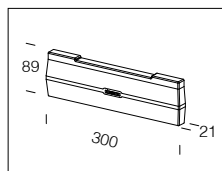
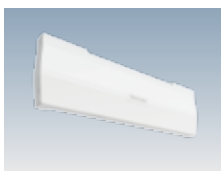


acc. 444 double lamp diffuser	
36	993875-00
58	993876-00
2+2x36	993880-00
2+2x58	993881-00
Self-extinguishing and dust proof ribbed polycarbonate with wire cover. It can also be used with acc. 424, 426 e 422.	

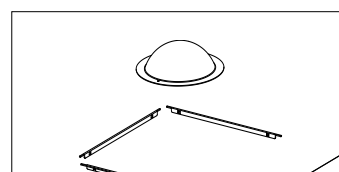
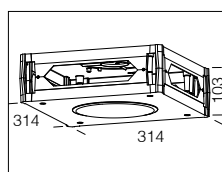
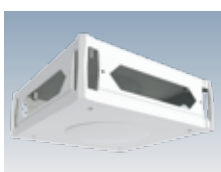


Version	T8-36W 1212mm	T8-58W 1512mm	T8-36W double	T8-58W double
Reflector	1212	1512		
Diffuser	1202	1502	2424	3024

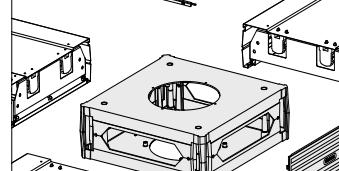
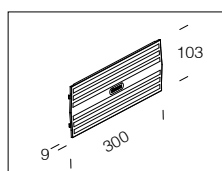
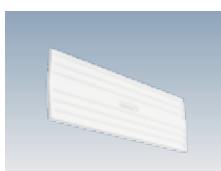
acc. 430 double lamp end cap	
white	993845-00
In ABS: to be used as an end cap for the bracket free versions.	



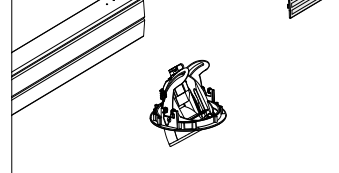
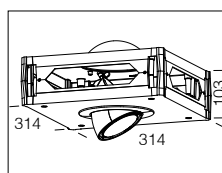
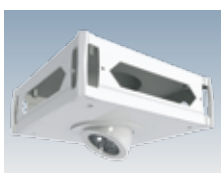
acc. 436 simple cube	
white	993851-00
Die-cast aluminium cube for "L", "T" or "X" joints.	



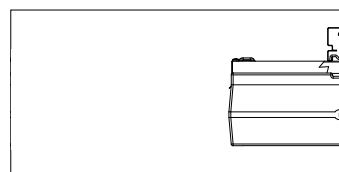
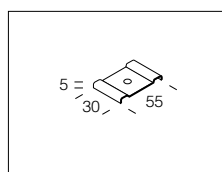
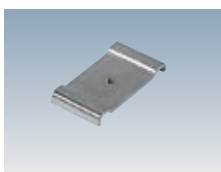
acc. 440 cube cover	
white	993859-00
In ABS, to be used as an end cap for the cube.	

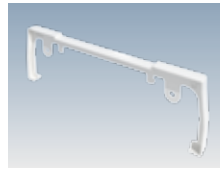
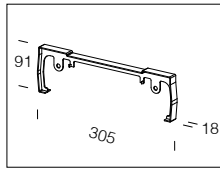
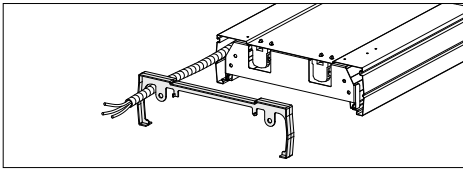


acc. 438 cube with spotlight	
DICR 35	993855-00
CDM-TM 20	993856-00
Die-cast aluminium cube with adjustable-angle recessed spotlight for "L", "T" or "X" joints.	

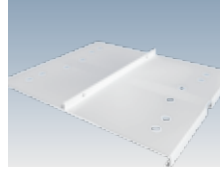
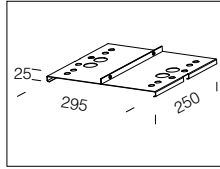
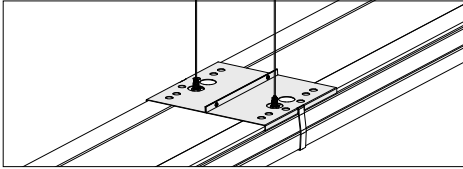


acc. 6036 universal connection	
galvanized	132987-00
Made of galvanized steel . To fasten waterproof fixtures on track art. 6000.	

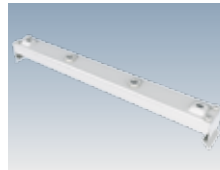
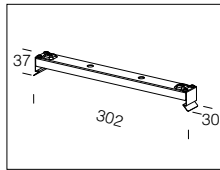
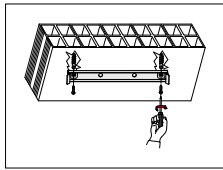
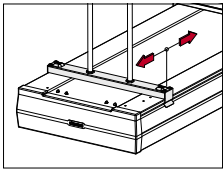




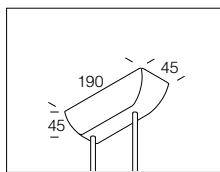
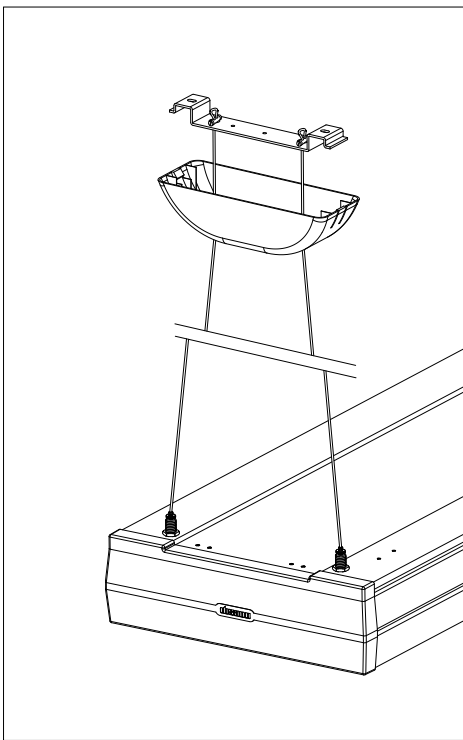
acc. 428 linear joint	
white	993843-00
In ABS. Linear joint system to carry cables. To be used in a continuous line.	



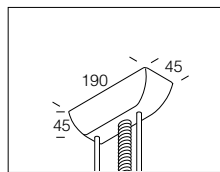
acc. 442 reinforcement plate joint	
white	993861-00
To be used as a steel reinforcement in a continuous line. Use is recommended every two lighting fixtures.	



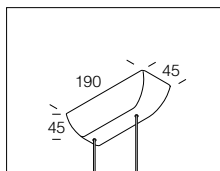
acc. 434 suspension / ceiling mounting	
white	993849-00
To be used with art. 1945/50 for ceiling or suspension installation. 2 per pack.	



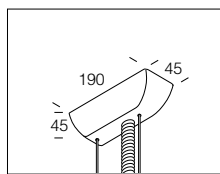
acc. 2605 suspension for rods Ø10	
white	994614-00
Nylon cover and steel brackets. For suspension with rods Ø10. Supply does not include rods.	



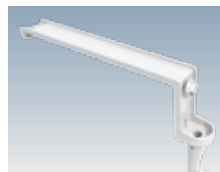
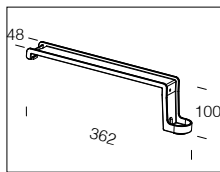
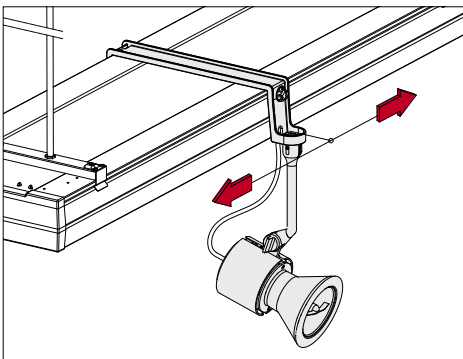
acc. 2606 electrified suspension for rods	
white	994615-00
Nylon cover and steel brackets. Supply power cable (max 2000 W). For suspension with rods Ø10. Supply does not include rods.	



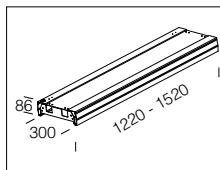
acc. 2607 simple suspension	
white	994616-00
Nylon cover and steel brackets. With steel wire Ø1,5mm; L=1,5m - 30Kg, and millimetric adjustment.	



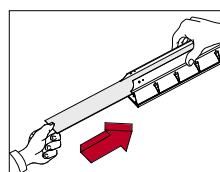
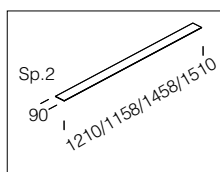
acc. 2608 electrified suspension	
white	994617-00
Nylon cover and steel brackets. With steel wire Ø1,5mm; L=1,5m - 30Kg, and millimetric adjustment.	



acc. 433 spotlight bracket	
white	993848-00
Die-cast aluminium bracket for Fosnova spotlights, Leo, Matrix and Sonik (to be purchased separately). Use is recommended in promotional areas.	

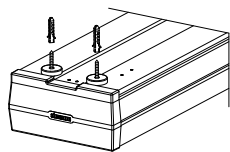


acc. 446 module S	
36 white	993891-00
58 white	993892-00
Supplied with cover and end cap in ABS. Allows the passage of cables and lines of services.	

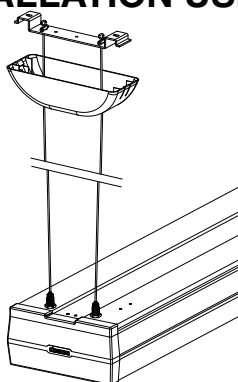


acc. 481 plate for IP 40	
54	993960-00
49	993961-00
36	993962-00
58	993963-00
To be used with the Speed range to obtain the degree of protection IP 40. Packaging 1 piece. In case of use with T8 lamp version buy 2 pieces.	

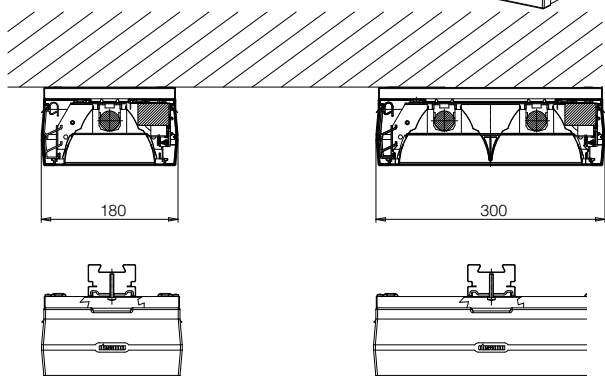
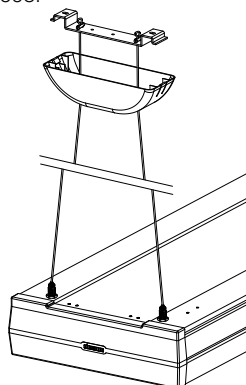
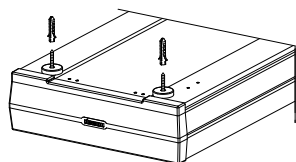
QUICK INSTALLATION USING ADJUSTABLE CABLES



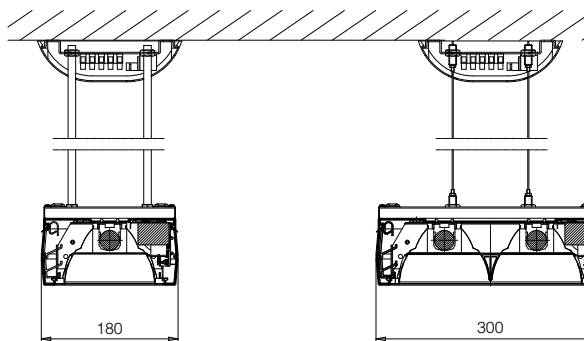
Ceiling mounting directly without accessories



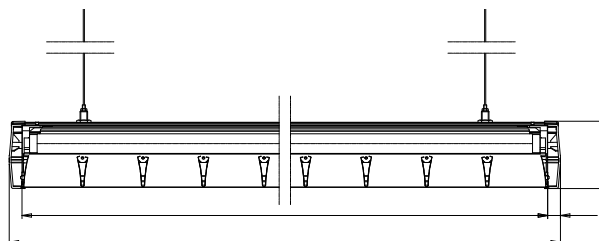
Suspension mounting with acc. 2607/2608.



Suspensions for rods (acc. 2605) or wire (acc. 2607)

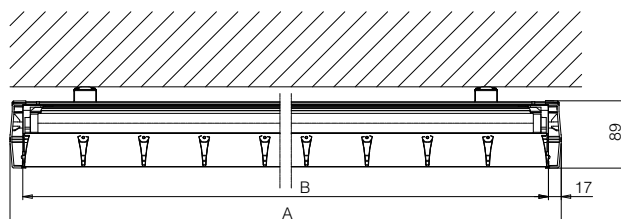


Wire or rod ceiling installation.



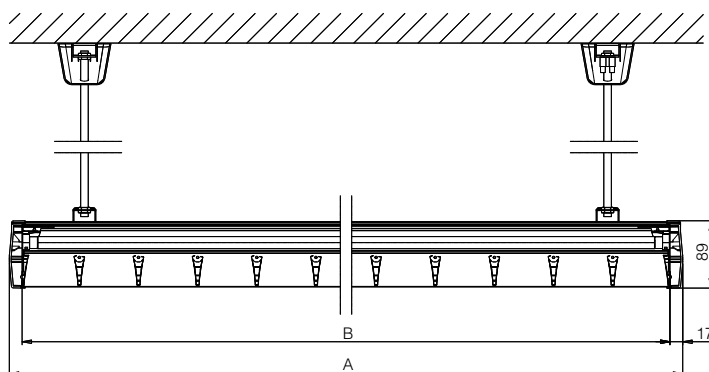
Version	A	B
T5 - 54W	1202	1168
T5 - 49W	1502	1468
T8 - 36W	1254	1220
T8 - 58W	1554	1520
T5 - 54W double	2372	2338
T5 - 49W double	2972	2938
T8 - 36W double	2476	2442
T8 - 58W double	3076	3042

Ceiling mounting installation using acc. 432/434



Version	A	B
T5 - 54W	1202	1168
T5 - 49W	1502	1468
T8 - 36W	1254	1220
T8 - 58W	1554	1520
T5 - 54W double	2372	2338
T5 - 49W double	2972	2938
T8 - 36W double	2476	2442
T8 - 58W double	3076	3042

Wire or rod ceiling installation with acc. 432/434



Version	A	B
T5 - 2x54W	1202	1168
T5 - 2x49W	1502	1468
T5 - 2x54W double	2372	2338
T5 - 2x49W double	2972	2938

